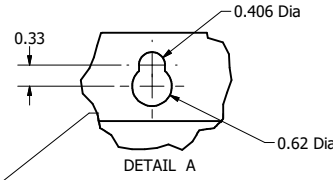


SineWave Part Number	Schematic Drawing#	Approx Weight (LBS)
KMG23A01A	24281-1A	124
KMG23A01P	24281-1P	125

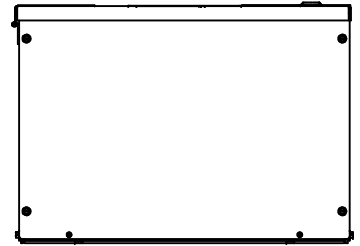
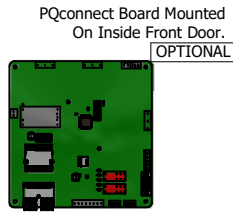
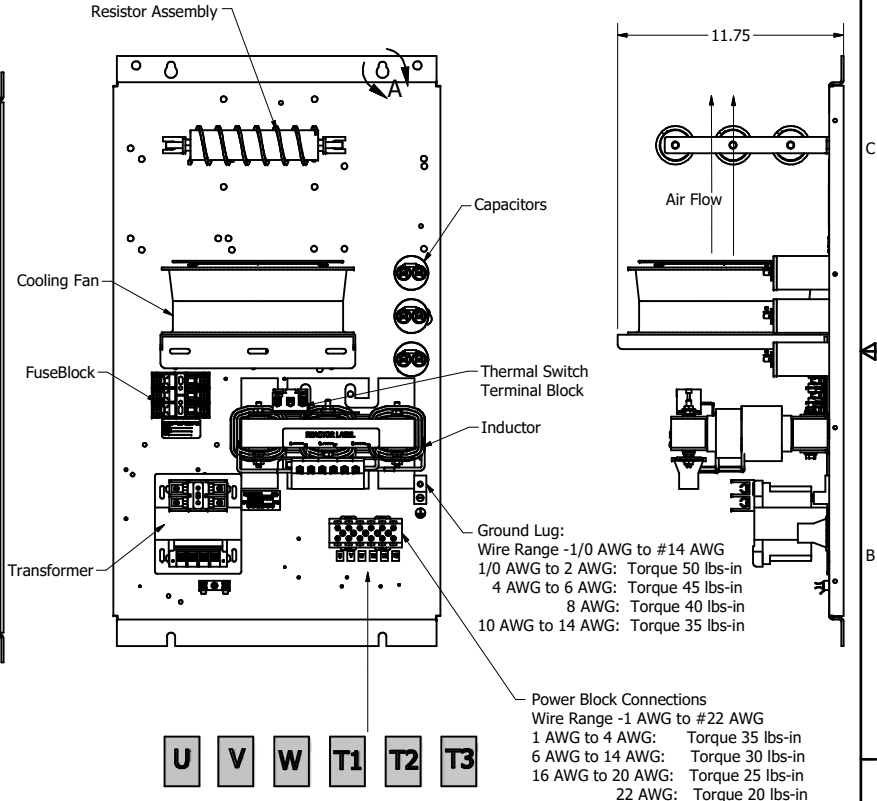
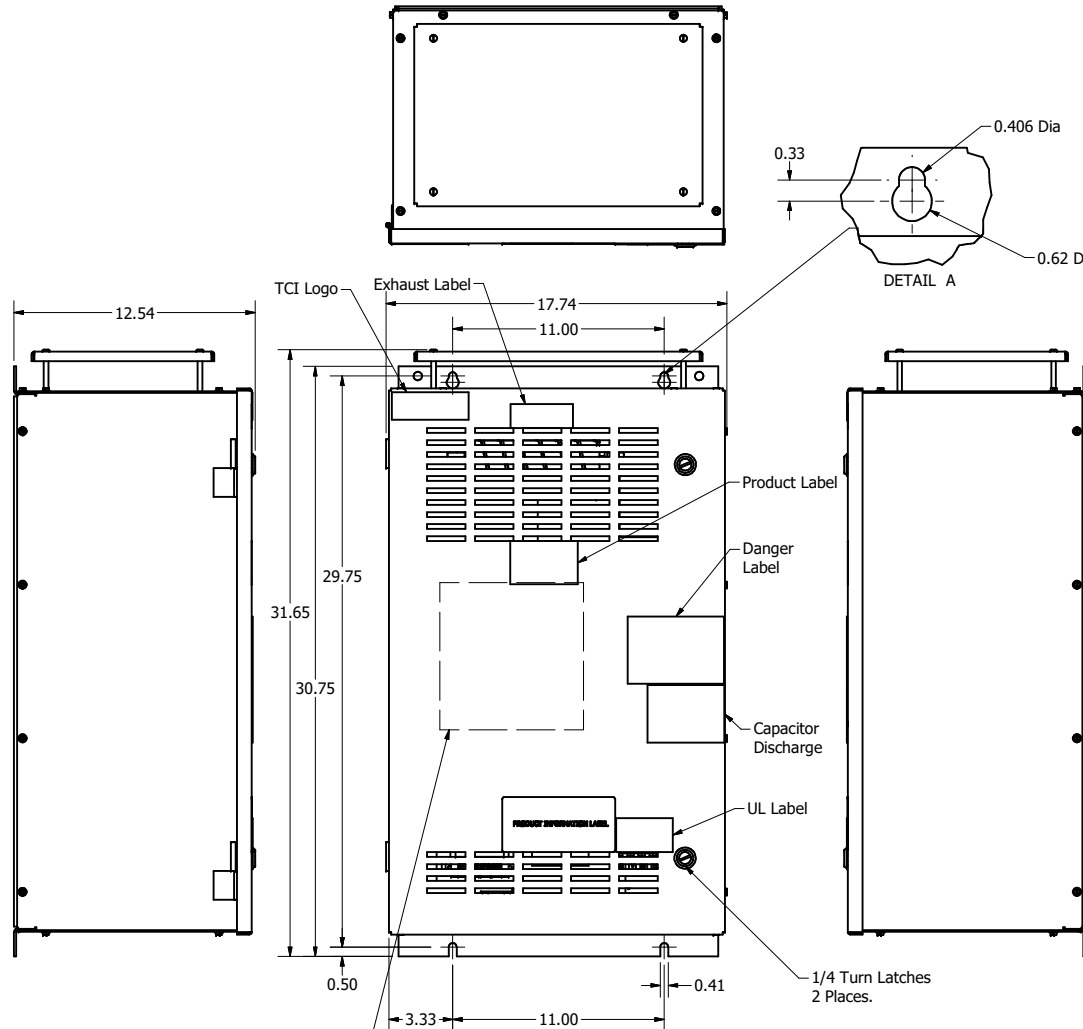
HorsePower (HP)	kVar	Max Amps	Voltage (V)	HZ	Phase
15	1.7	23	480	60	3

Thermal Switch Terminal Block

Wire Range: 18 AWG To 4 AWG.
Torque: 20 LB-IN (2.3 Nm)
Switch Opens on Temperature Rise
Contact Rating: 6A @ 120 VAC



D
C
B
A



Customer Is Responsible For Installation to Meet All National And Local Electrical Codes.

Material(s) Shall be RoHS Compliant

TCI, LLC CLAIMS PROPRIETARY RIGHTS IN THE MATERIAL HEREIN DISCLOSED. IT IS SUPPLIED WITHOUT PREJUDICE TO ANY PATENT RIGHTS OF TCI AND MAY NOT BE REPRODUCED OR USED TO MANUFACTURE ANYTHING SHOWN THEREIN WITHOUT WRITTEN PERMISSION FROM TCI.					TOLERANCES (EXCEPT AS NOTED)	TCI W132 N10611 Grant Drive Germantown, WI 53022 KMG23A01-, SineWave Filter Enclosed Type 1, 15HP, 480V DESIGNED BY: DSW DATE: 10/07/2014 104351DG DRAWN BY: DSW SCALE: 1/8 CHECKED BY: [] DATE: [] REVISION: [] DATE: [] BY: [] TOLERANCE: ± 1° SHEET 1 OF 1
	F	Add PQ Board	9/4/2020	DSW	FRACTIONAL ± 1/16	
	E	S379 KTRMG23A redesigned	9/3/2020	DSW	ANGULAR	
	NO	REVISION	DATE	BY	± 1°	